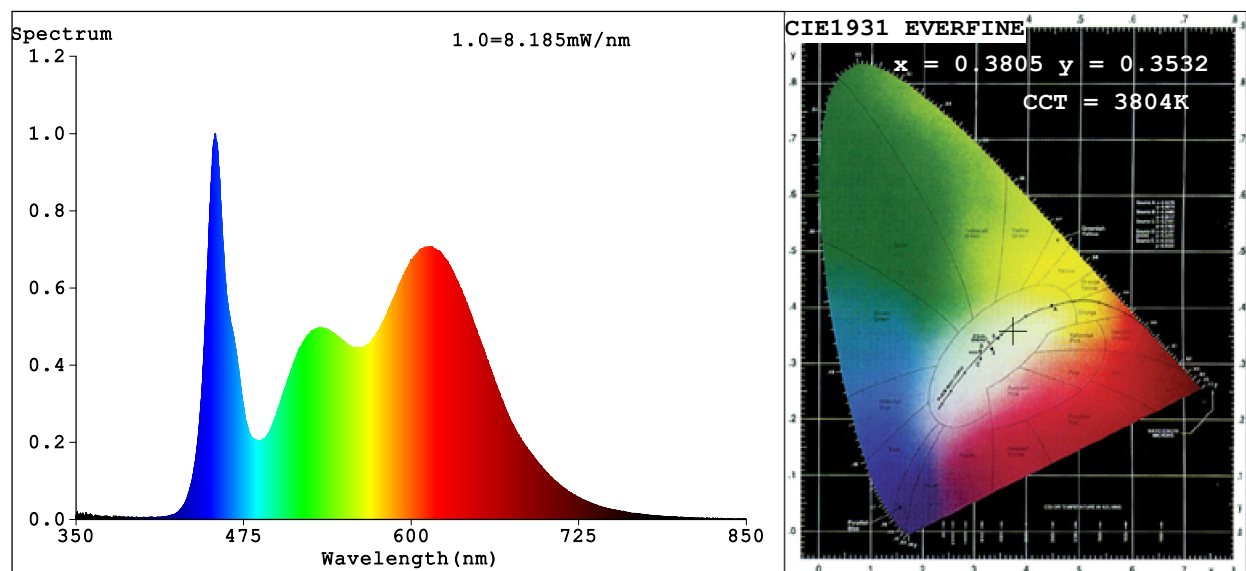


## Spectrum Test Report



### Color Parameters:

Chromaticity Coordinate:  $x=0.3805$   $y=0.3532$   $u'=0.2350$   $v'=0.4907$

CCT=3804K (Duv=-0.0115) Dominant WL:Ld =588.7nm Purity=20.1%

Ratio:R=22.7% G=73.1% B=4.2%; Peak WL:Lp=453.9nm FWHM=19.8nm

Render Index:Ra=93.7 CRI=91.6 TM30:Rf=89 Rg=105

R1 =94 R2 =95 R3 =97 R4 =97 R5 =95 R6 =90 R7 =92

R8 =91 R9 =82 R10=94 R11=92 R12=74 R13=93 R14=98 R15=97

### Photo Parameters:

Flux = 298.2 lm Eff. : 28.39 lm/W Fe = 1.023 W

### Electrical parameters:

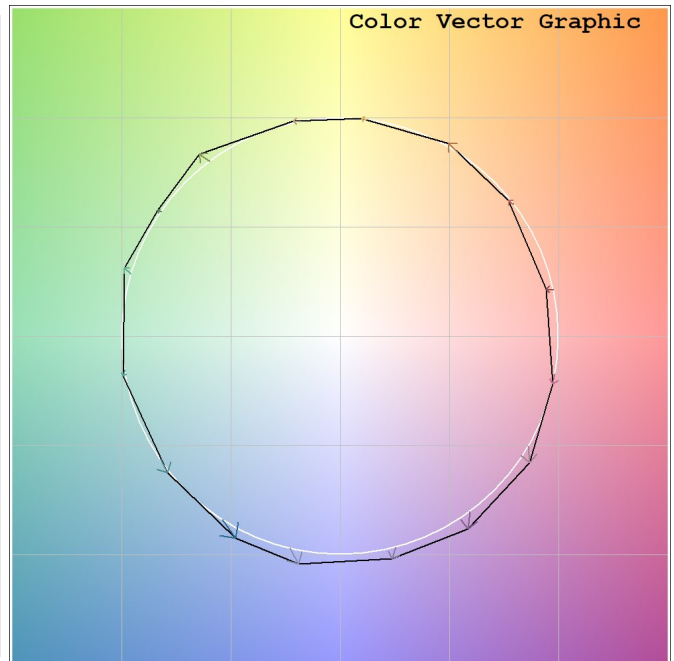
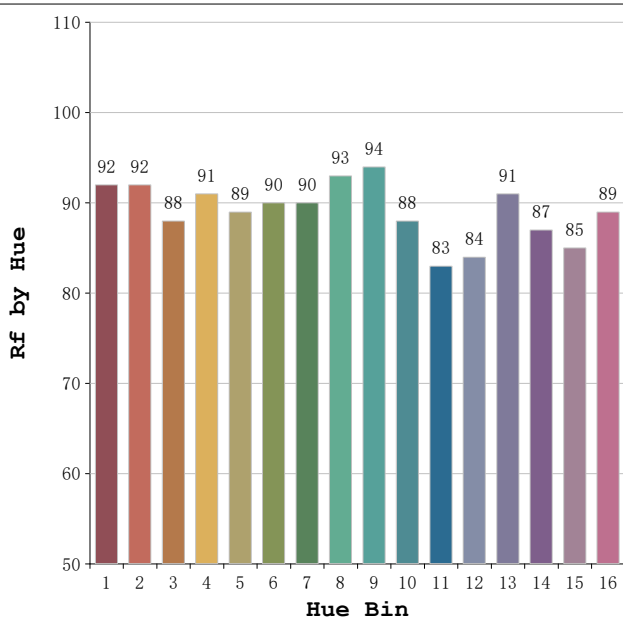
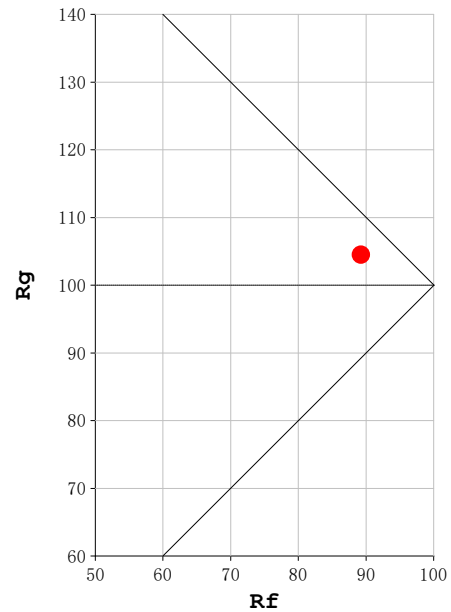
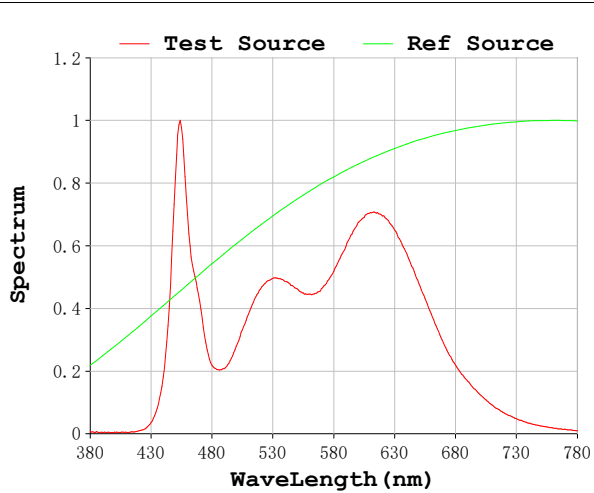
V = 23.998 V I = 0.4378 A P = 10.51 W PF = 1.000

Status: Integral T = 4406 ms Ip = 47814 (73%)

Model:Africa Cut&connect 4000K  
Tester:Alejandro Hervas  
Temperature:20Deg  
Manufacturer:Luz Negra

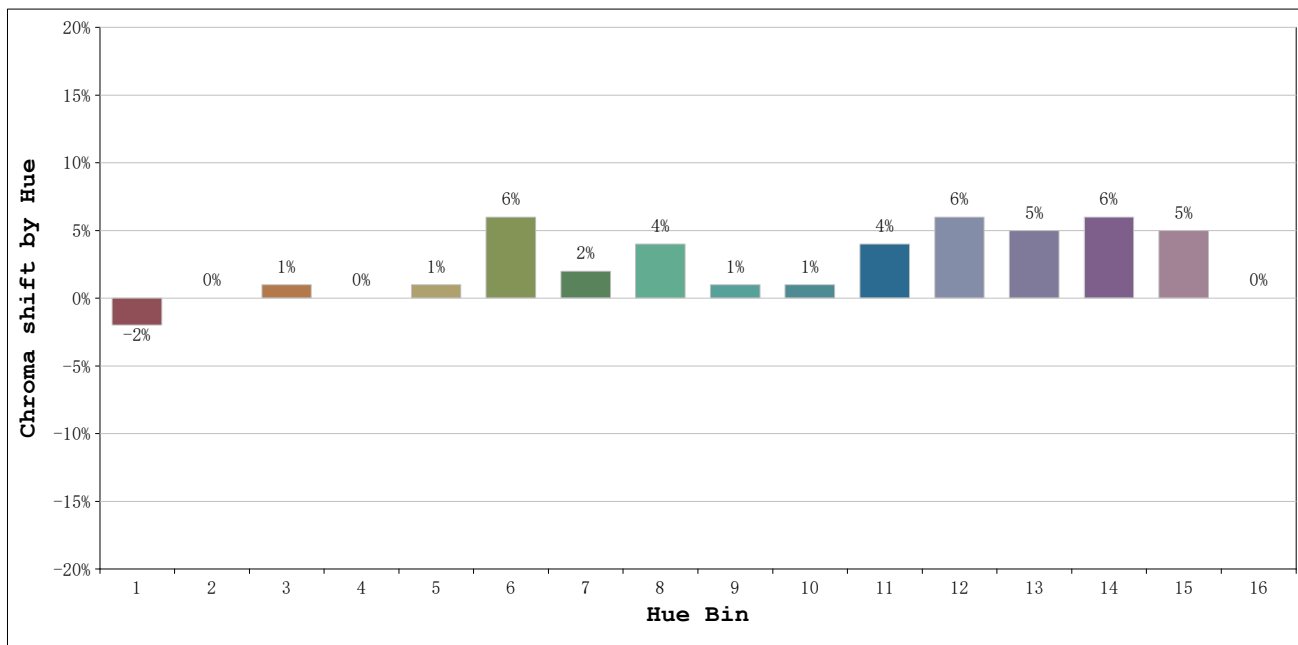
Number:10.344  
Date:2026-03-25 13:57:59  
Humidity:50%  
Remarks:100cm de tira flexible

**Rf: 89**      **CCT: 3804 K**      **u': 0.2350**  
**Rg: 105**      **Duv: -0.0115**      **v': 0.4907**



Model: Africa Cut&connect 4000K  
 Tester: Alejandro Hervas  
 Temperature: 20Deg  
 Manufacturer: Luz Negra

Number: 10.344  
 Date: 2026-03-25 13:57:59  
 Humidity: 50%  
 Remarks: 100cm de tira flexible



Hue Bin	Hue Angle	Rf	Graphic shift(%)	
			Chroma	Hue
1	0.0° - 22.5°	92	-2	1
2	22.5° - 45.0°	92	0	3
3	45.0° - 67.5°	88	1	5
4	67.5° - 90.0°	91	0	3
5	90.0° - 112.5°	89	1	3
6	112.5° - 135.0°	90	6	2
7	135.0° - 157.5°	90	2	0
8	157.5° - 180.0°	93	4	-1
9	180.0° - 202.5°	94	1	3
10	202.5° - 225.0°	88	1	7
11	225.0° - 247.5°	83	4	10
12	247.5° - 270.0°	84	6	5
13	270.0° - 292.5°	91	5	-2
14	292.5° - 315.0°	87	6	-4
15	315.0° - 337.5°	85	5	-5
16	337.5° - 360.0°	89	0	-3

Model: Africa Cut&connect 4000K  
 Tester: Alejandro Hervas  
 Temperature: 20Deg  
 Manufacturer: Luz Negra

Number: 10.344  
 Date: 2026-03-25 13:57:59  
 Humidity: 50%  
 Remarks: 100cm de tira flexible